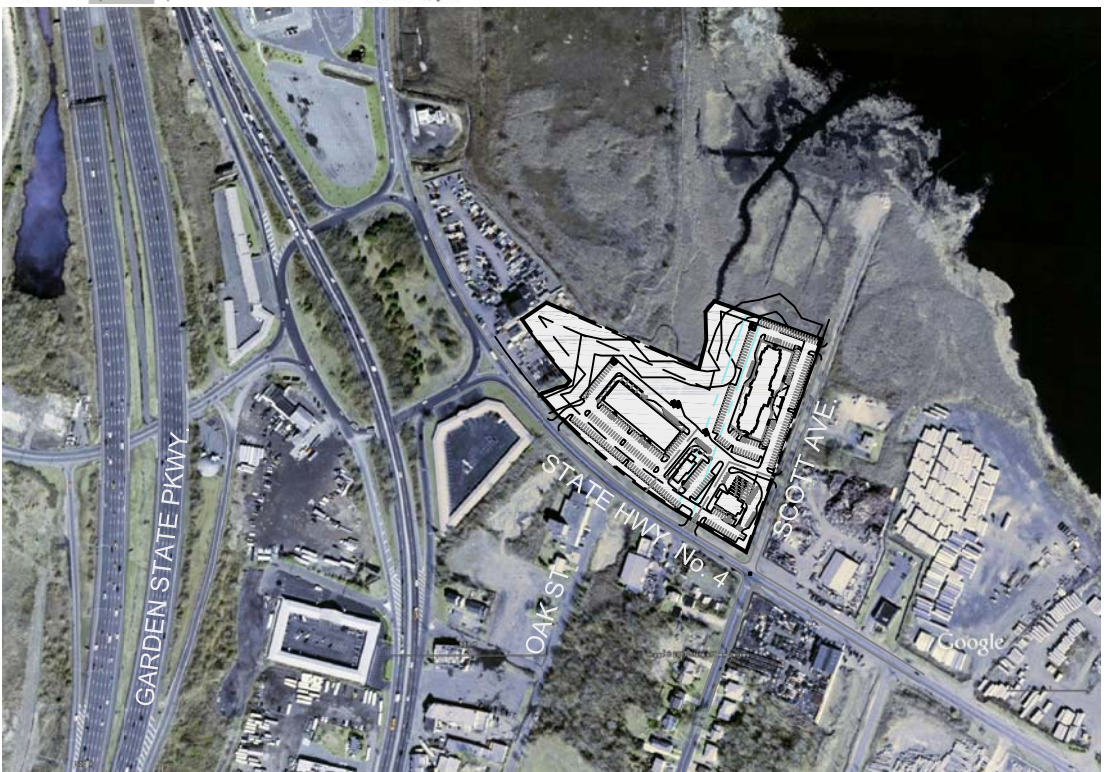
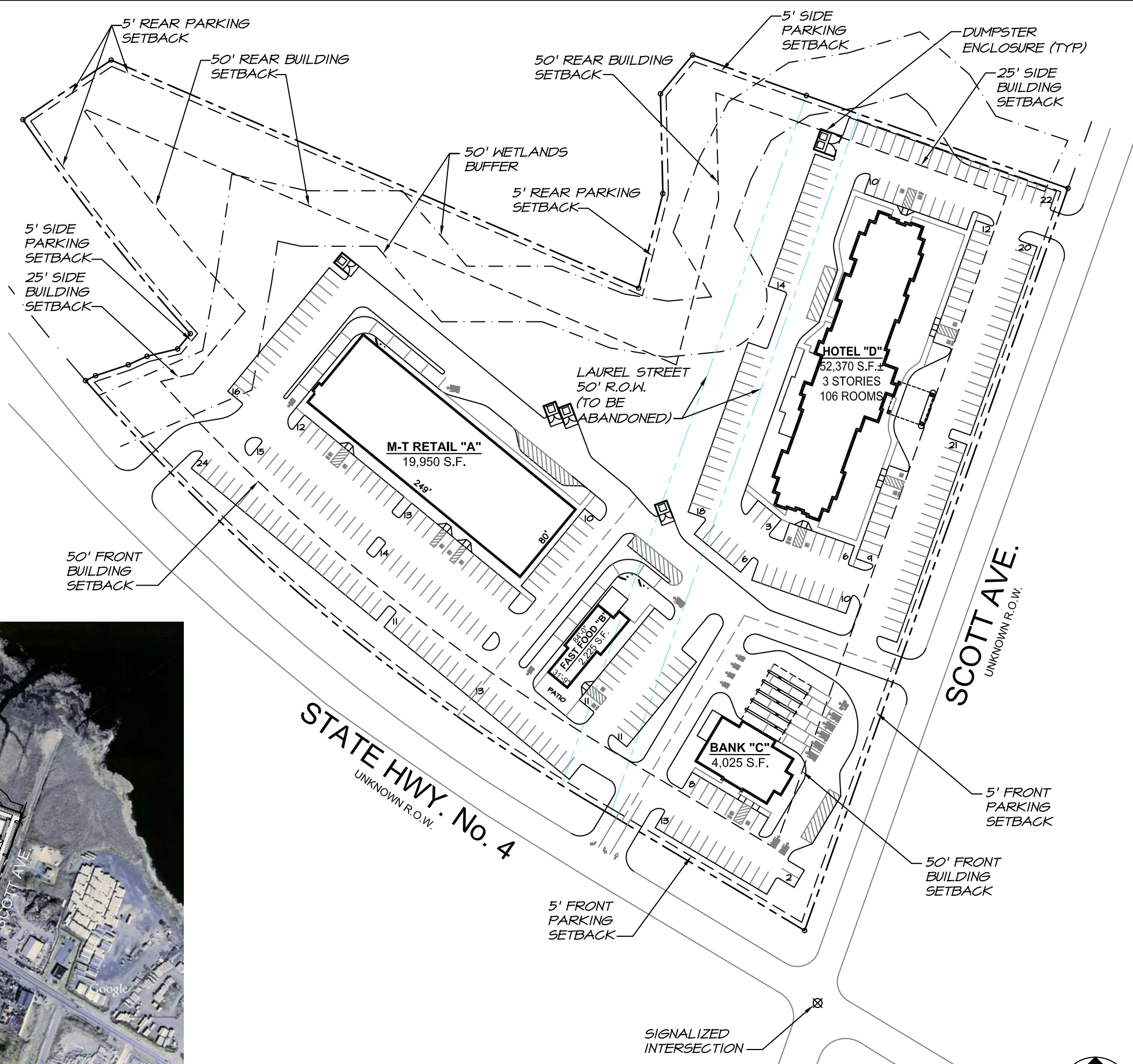


SITE TABULATIONS

SCHEME: 6a

Tract	Terant/Use	Land Area	Lease Area	Bldg Area	Strictest Parking Ratio	Regular Parking Required	Over/ (Under) Provided	Notes
M-T Retail "A"	front 24s			19,950 s.f.	200 (5/1000)	99.75	115	15.25
Fast Food "B"				2,225 s.f.	60 seats (1.3 seats + 1.25 of take-out service)	20.00	35	10
Bank "C"				4,025 s.f.	250 s.f. (4/1000)	16.10	23	6.90
Hotel "D"				52,370 s.f.	106 rooms (1 bedroom)	106.00	0	11
Total:					398,316 s.f.	78,570 s.f.		
Lot Covera:					9.14 Ac.	19.73%		
Landscaping Required:		79,663 s.f.		20%				
Landscaping Provided:		182,887 s.f.		46%				
Total parking:					246	324	78.15	
Handicapped parking:					8	17	9	13
Loading Spaces:					3	3	0	14
Zoning:				B-3				

Notes:	1	2	3	4	5	6	7	8	9	10	11	12	13	14	15	16
	Min. drive aisle is 24' for 90° parking.	Typical parking stall dimensions are 9'x18'.	Minimum turn radius to face of curb at drives is 10' unless noted otherwise.	Minimum turn radius to face of curb at parking spaces is 2' unless noted otherwise.	This site drawing was made with in-house research or info provided to us, but does not include all boundary, improvements or other site data of unknown nature or known site data not made available to us. No warranties or guaranties are given or implied.	Confirm adjacent zoning, meets & bounds, utilities, drainage, CC&R's, easements & landscape reqmts	Landscaping to be 20% of total site.	The city parking ratio for Retail is 1 p.s. per 200 s.f. = 5/1000	The city parking ratio for Banks is 1 p.s. per 250 s.f. = 4/1000	The city parking ratio for Restaurants is 1 p.s. per 3 seats + 1 p.s. per 25 s.f. of take-out service.	The city parking ratio for Hotel is 1 p.s. per room + 1 p.s. per 1000 s.f. of conference area.	50' wetlands buffer to detain storm water for new impervious surface.	ADA Accessible Parking Spaces required: 1-25=1, 26-50=2, 51-75=3, 76-100=4, 101-150=5, 151-200=6, 201-300=7, 301-400=8, 401-500=9, 501-1,000=2% of total, >1001=20+1 per ea. 100 over 1,000.	Typical loading space is 12'x50'; 1@ 0-25,000 s.f. + 1.15,000 s.f. thereafter.	A minimum of 10% of any surface parking facility shall be landscaped about the interior and shall include one shade tree for every twenty parking spaces.	Shaded cells () have not been calculated or confirmed, yet.



AREA MAP

0' 300' 600' 1200'



SCALE: 1" = 600'-0"

SITE SKETCH #6a

Sayreville, NJ

State Highway No. 4 & Scott Ave

0' 50' 100' 200'



SCALE: 1" = 100'-0"



ISSUED:
9/18/07

REVISIONS:

361 GROUP
DESIGN SERVICES, INC.

**BANK, FAST FOOD,
HOTEL & M-T RETAIL**
STATE HWY. No. 4 & SCOTT AVE.
SAYREVILLE, NJ

DRAWN: LR CHECKED: BT

JOB NO: 2006-

TITLE
Site Sketch

Sayreville, NJ

SHEET

SS-6a.1

Sheet 1 of 1