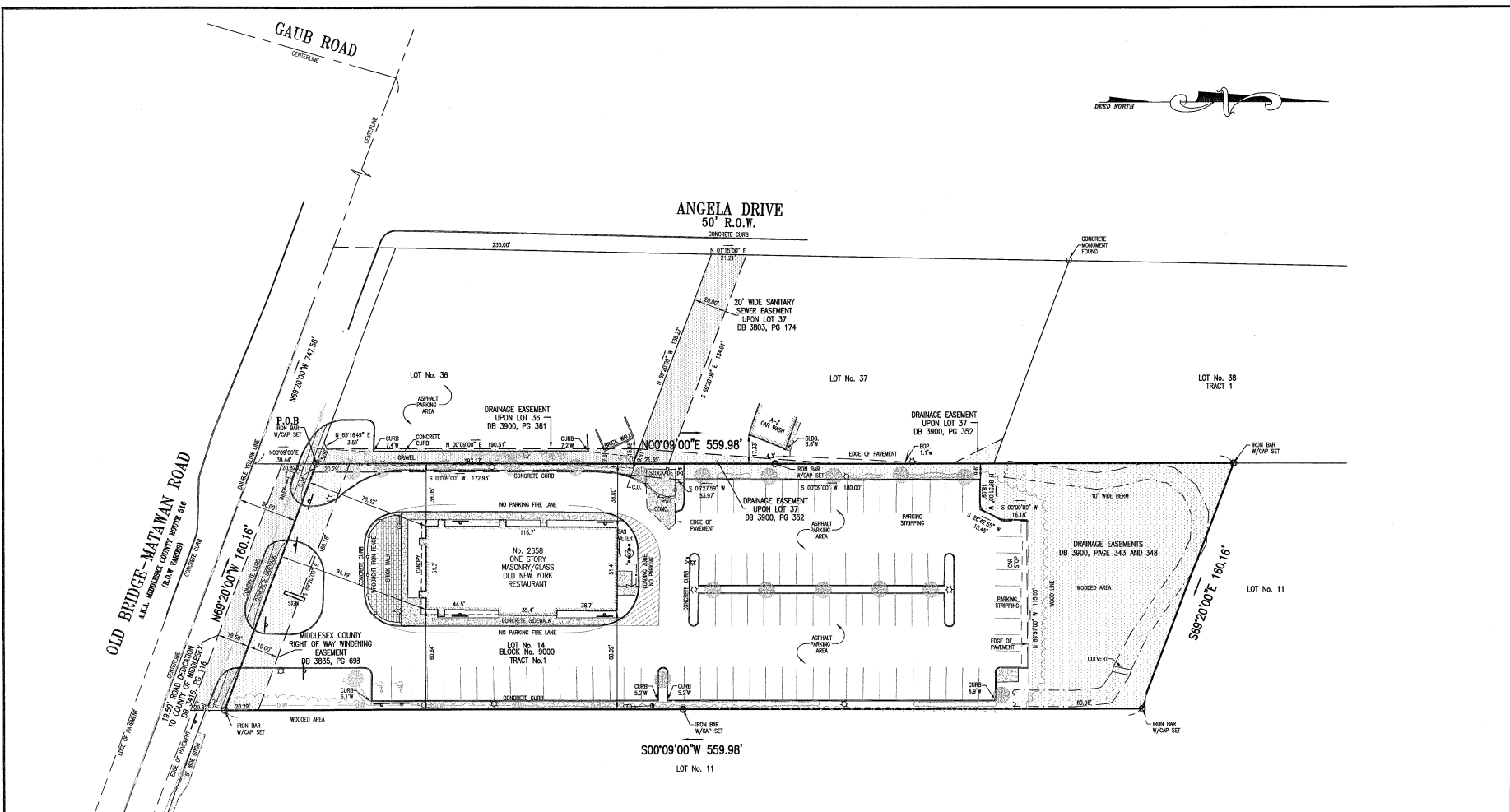


P:\2005003\003\2005003.001_2658.route 516 west.dwg, 5/17/2005, 12:51:40 PM, jmmurphy, \\\GCE\TDS\00\GCE\TDS\003



300°09'00"E 559.98'

LOT No. 11

GRAPHIC SCALE



(IN FEET)
1 inch = 40 ft.

LEGEND

- | | | | |
|---|----------------------|---|-----------------------|
| — | STREET SIGN | ○ | IRON BAR FOUND |
| — | CLEANOUT | • | MAILBOX |
| — | SEWER MANHOLE | ● | STREET TREE |
| — | DRAINAGE MANHOLE | ● | EXIST. SPOT ELEVATION |
| — | CATCH BASIN | — | EXISTING CONTOUR LINE |
| — | CATCH BASIN | — | GAS LINE |
| — | SOIL BORING | — | WATER LINE |
| — | GUY WIRE | — | GAS VALVE |
| — | UTILITY POLE | — | WATER VALVE |
| — | P.K. NAIL FOUND | — | FIRE HYDRANT |
| — | CONC. MONUMENT FOUND | | |

CERTIFICATION:—

I CERTIFY THAT THIS PLAN IS THE RESULT OF A FIELD SURVEY MADE ON MARCH 15th, 2005 BY ME OR UNDER MY DIRECT SUPERVISION, IN ACCORDANCE WITH THE RULES AND REGULATIONS PRESCRIBED BY THE STATE BOARD OF PROFESSIONAL ENGINEERS & LAND SURVEYORS.

THE INFORMATION SHOWN HEREON CORRECTLY REPRESENTS THE CONDITIONS FOUND AT, AND AS OF THE DATE OF THE FIELD SURVEY, EXCEPT SUCH IMPROVEMENTS OR EASEMENTS, IF ANY, BELOW THE SURFACE AND NOT VISIBLE.

DESCRIPTION:—

BEING SHOWN AND DESCRIBED AS LOT No. 11 IN BLOCK No. 9000 ON THE TOWNSHIP OF OLD BRIDGE TAX ASSESSMENT MAP.

BEING MORE COMMONLY KNOWN AS No. 2658 ROUTE 516 WEST TOWNSHIP OF OLD BRIDGE, MIDDLESEX COUNTY, NEW JERSEY.

REV.	DATE	DESCRIPTION	CHK'D.	APP'V'D



Harbor Consultants Inc.
Engineers & Surveyors
320 NORTH AVENUE EAST
CRANFORD, N.J. 07016
Phone (908) 276-2715 Fax (908) 709-1738
Email: info@harborconsultantsinc.com

SURVEY OF
2658 ROUTE 516 WEST
LOT No.11, BLOCK No. 9000

(Signature)

VICTOR E. VINEGRA
N.J. P.E. & L.S. Lic. No. 34460

TOWNSHIP OF OLD BRIDGE	MIDDLESEX COUNTY	NEW JERSEY	CERTIFICATE OF AUTHORIZATION No. 24GA27962100	PROJECT No. 2005003.031
SCALE: 1"=40'	DATE: 04/05/05	DESIGNED BY: \E.V.	DRAWN BY: W.P.B.	WORK FILE: 2658 ROUTE 516 WEST