

Livingston, NJ

Route 10 & Livingston Avenue

17 W. Mount Pleasant Ave, Livingston, NJ 07039



• Project Profile

- Join Starbucks, Haven Savings Bank and Verizon
- 7,877 SF Single Story Multi-Tenant Building @ Signalized Intersection
- 34 Parking Spaces; Ingress/Egress on W. Mount Pleasant Ave. (SR 10) & S. Livingston Ave.
- Available: Unit # , 1,698 SF Endcap (Former Twist It Frozen Yogurt)
- Asking Rent \$30.00/SF; NNN Charges: \$15.00/SF

• Demographics

	1 MILE	3 MILES	5 MILES
• Population	12,309	58,418	208,55
• Day Population	10,494	81,766	256,574
• Avg Household Income	\$167,530	\$166,379	\$147,489
• Med Household Income	\$119,982	\$121,669	\$97,632
• Median Age	39	40	38
• Household Growth '00 - '09	1.37%	4.27%	1.34%

• Traffic Counts

- Average Daily Traffic Route 10 33,746 Cars
- Average Daily Traffic Livingston Ave 20,284 Cars

• Generators

- Nearby Retailers: Kings, CVS, Walgreens, AT&T, Super Cuts, Bottle King; Livingston Town Center
- Banks: TD, Chase, Wells Fargo, HSBC
- QSR's: Subway, Dunkin Donuts
- Professional/Medical Offices, Retail, Restaurants

Livingston, NJ

Route 10 & Livingston Ave

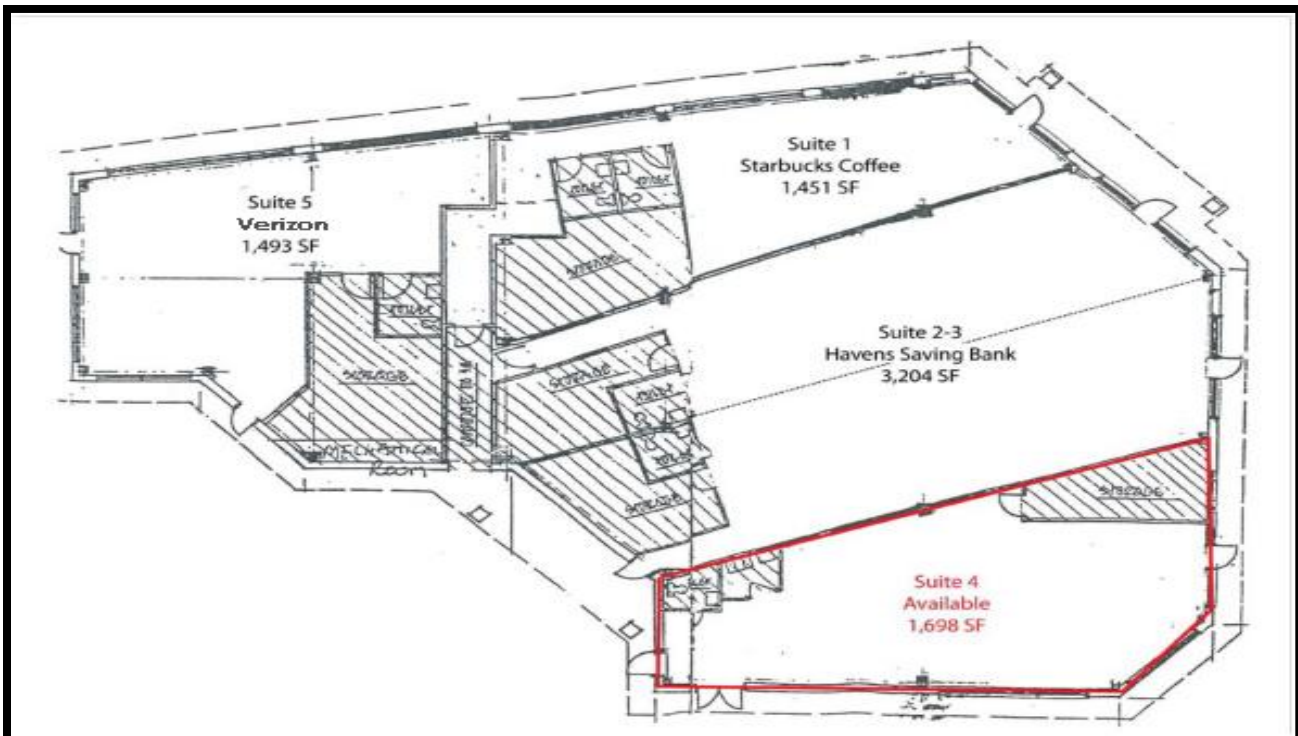
www.summitrealtyllc.com

17 W. Mt. Pleasant Ave,
Livingston, NJ 07039

- **Area Map**



- **Plan**



Robert A. Delia, Licensed Real Estate Broker
Summit Realty LLC
www.summitrealtyllc.com

Office: 908.832.0276
Cell: 201.615.4450
bdelia@summitrealtyllc.com

