

# Hanover Township, NJ NEC Parsippany & Whippany Roads



## ■ Project Profile

- 1.6 Acre Development Site
- Permitted Uses: Bank, Restaurant, Retail
- Ground Lease, Sale or Build to Suit

## ■ Demographics

	<b>1 MILE</b>	<b>3 MILES</b>	<b>5 MILES</b>
○ Population	5,360	37,788	153,740
○ Day Population	6,676	69,198	213,772
○ Avg Household Income	\$121,143	\$115,876	\$117,407
○ Med Household Income	\$92,769	\$91,668	\$88,200
○ Median Age	40	40	38

## ■ Traffic Counts

○ Parsippany Road	11,000
○ Whippany Road	14,000
○ Total Average Daily Traffic	25,000

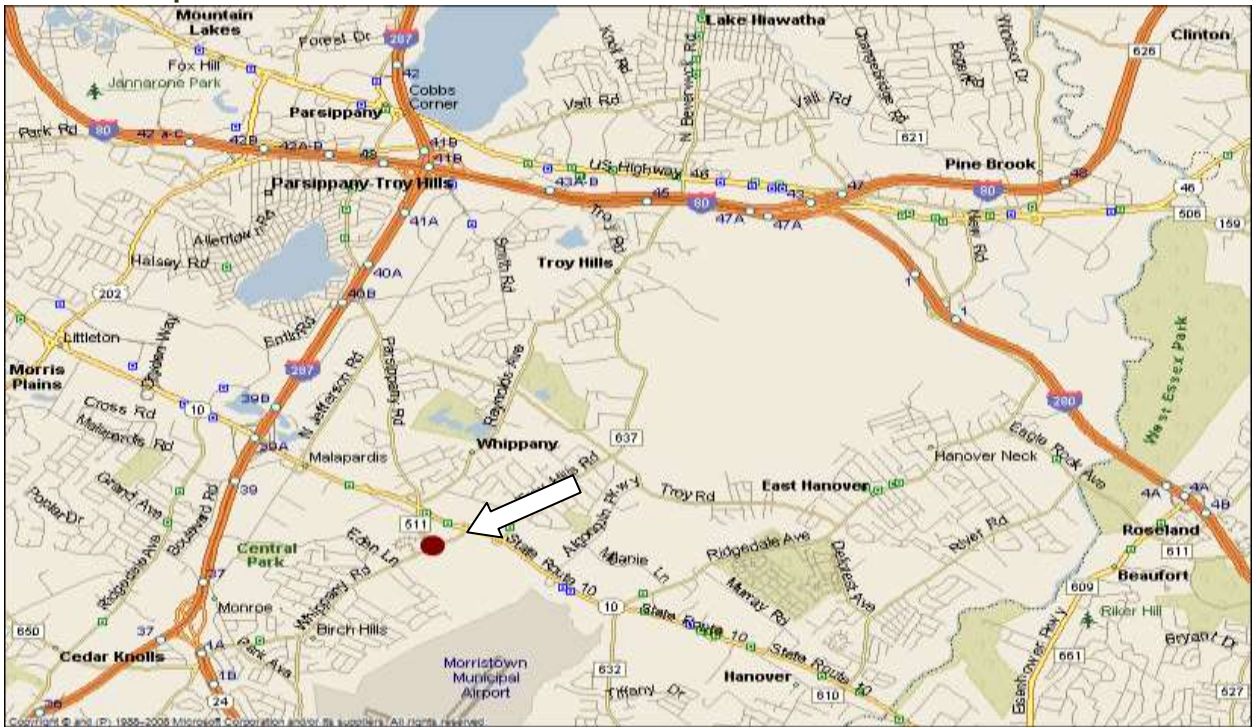
## ■ Generators

- Alcatel/Lucent Facility .1Mi/E
- Valley National Bank; Kindercare

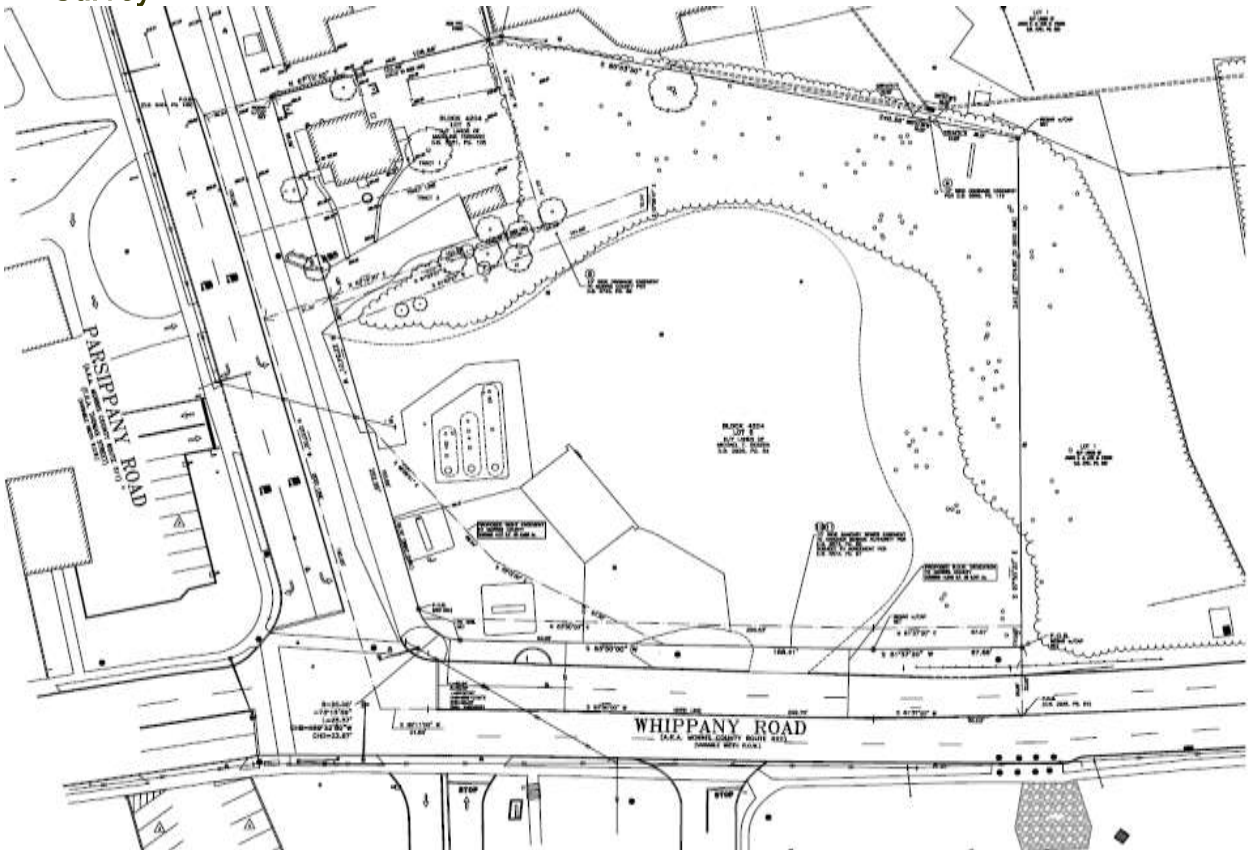
## ■ Contact

- Robert A. Delia, Licensed Real Estate Broker  
Summit Realty LLC  
Office: 908.832.0276 Cell: 201.615.4450  
[bdelia@summitrealtyllc.com](mailto:bdelia@summitrealtyllc.com) [www.summitrealtyllc.com](http://www.summitrealtyllc.com)

### Area Map



### Survey



Contact: Robert A. Delia Summit Realty LLC  
Office: 908.832.0276 Cell: 201.615.4450  
[bdelia@summitrealtyllc.com](mailto:bdelia@summitrealtyllc.com) [www.summitrealtyllc.com](http://www.summitrealtyllc.com)